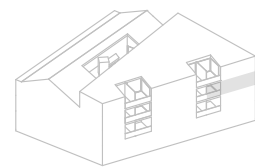
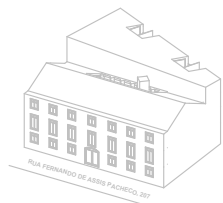


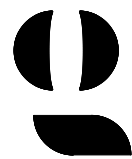
OURIQUE

Rua Fernando Assis Pacheco Letra D , com
acesso pela Rua Saraiva de Carvalho n.207,
1250-245 Lisboa



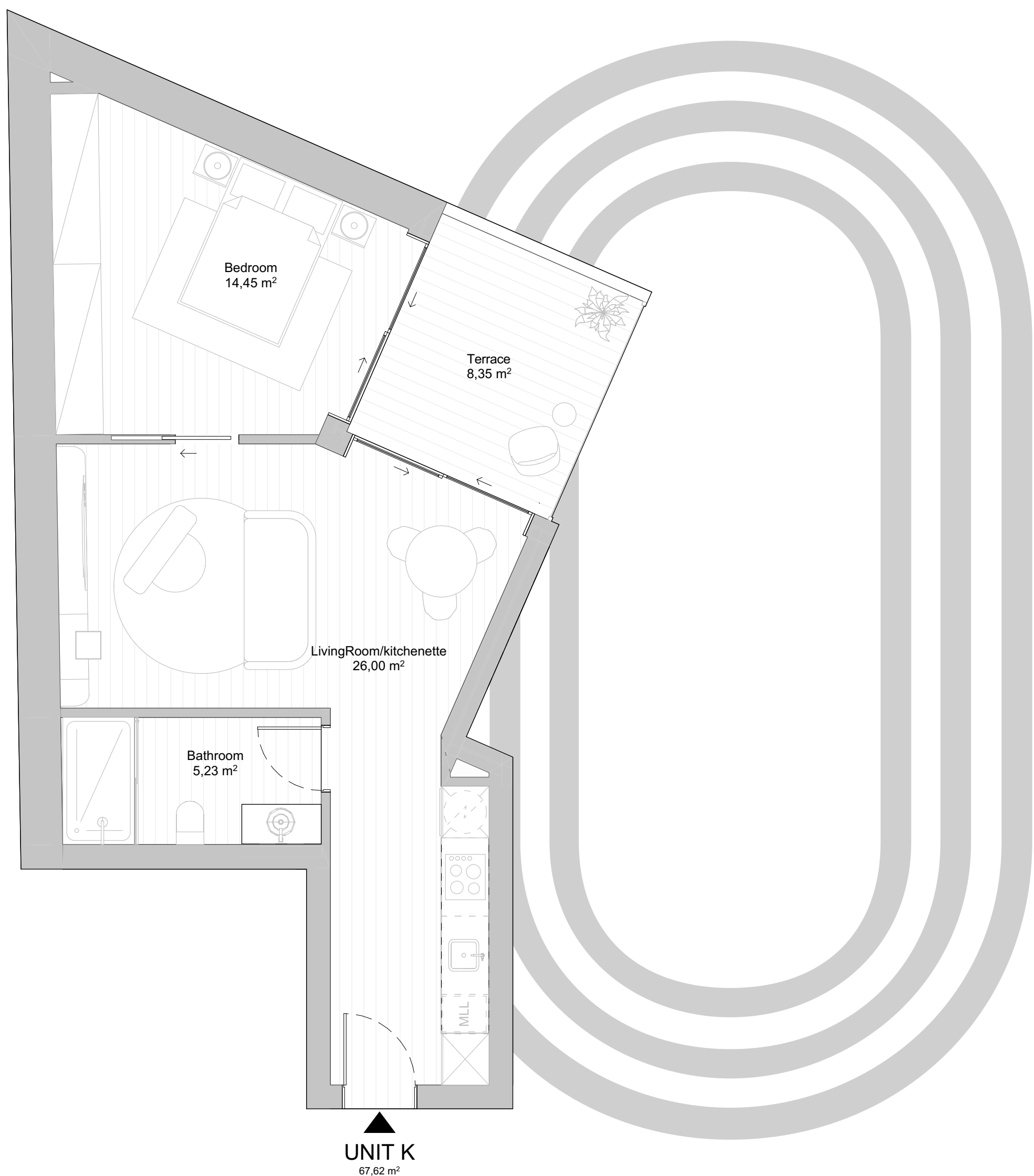
FRAÇÃO K
SEGUNDO ANDAR
1 QUARTO
1 CASA DE BANHO
PGA 727,85 sq ft | 67,62 m²
EXPOSIÇÃO LESTE

SECOND FLOOR
1 BEDROOM
1 BATHROOM
PGA 727,85 sq ft | 67,62 sq m*
EAST EXPOSURE



GAVINHO
PROPERTIES

All square footages are approximate. Development by GAVINHO PROPERTIES LDA. The complete offering terms are in an offering plan available from the developer. Units will not be offered furnished unless stated on the acquisition contract. Furniture and landscaping layouts shown are for concept and can be changed or adapted to suit engineering and architecture demands. No representation or warranty is made that a unit owner will be able to implement the furniture or landscaping layout shown on this floor plan. Due to the unique façade of this building, unit area per floor as well as windows in this layout may vary from floor to floor. Refer to the offering plan for dimensions and conditions.



RESIDENCE K | SECOND FLOOR | 1 BEDROOM